



3 Justinian Close, Chandler's Ford, SO53 2NW

£250,000

A rare and fantastic opportunity to purchase a spacious and brilliantly located two bedroom maisonette within Thornden catchment. The first floor home enjoys some key features such as a two good sized bedrooms with built in wardrobes, cosy living room, a garage, an allocated parking space and private west facing garden. Justinian Close is just a short walk to Fryern Arcade, Waitrose, Doctors Surgery, pubs, multiple eateries and the number one bus route.

ACCOMMODATION

Entrance hall:

Stairs up to the property.

Hallway:

Access to loft space. Storage cupboard.

Living Room:

14'3" x 11'11" (4.34m x 3.63m)

Kitchen:

11'4" x 8'6" (3.455m x 2.60m) Range of units, integral electric cooker and hob, space for washer drier, space for fridge-freezer, sink unit, breakfast bar and serving hatch.

Bedroom 1:

14'5" x 9'9" (4.40m x 2.98m) Built in wardrobe

Bedroom 2:

11'1" x 10'1" (3.38m x 3.07m) Built in wardrobe

Bathroom:

Suite comprising of bath with shower overhead, wash basin, WC, heated towel rail and an airing cupboard.

OUTSIDE

Rear Garden:

Measuring approximately 61'5" x 20'8" the private garden is west facing and consists of a patio area, laid to lawn.

Garage:

16'4" x 7'10" (4.99m x 2.40m) Single garage with electric door and parking space in front.

OTHER INFORMATION

Tenure:

Leasehold with share of Freehold

Term of Lease:

999 Years from 1972

Ground Rent:

£25 per annum

Approximate Age:

1972

Approximate Area:

848 sq ft / 78.7 sq m

Sellers Position:

Looking for a forward purchase

Heating:

Electric night storage heaters

Windows:

UPVC Double glazing

Loft Space:

Partially boarded

Infant/Junior School:

Scantabout Primary School

Secondary School:

Thornden School

Local Council:

Eastleigh Borough Council - 02380 688000

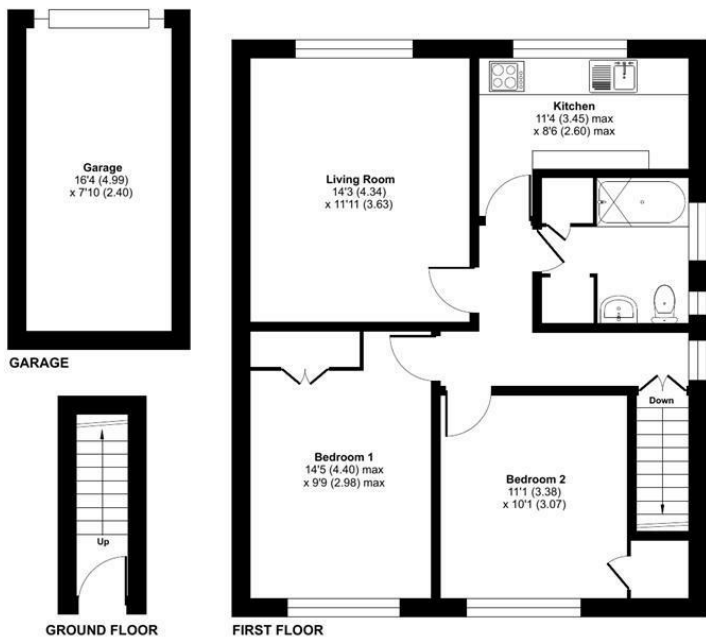
Council Tax:

Band B

Agents Note:

If you have an offer accepted on a property we will need to, by law, conduct Anti Money Laundering Checks. There is a charge of £60 including vat for these checks regardless of the number of buyers involved.

Ground Floor = 28 sq ft / 2.6 sq m
 First Floor = 691 sq ft / 64.1 sq m
 Garage = 129 sq ft / 11.9 sq m
 Total = 848 sq ft / 78.7 sq m
 For identification only - Not to scale



Energy Efficiency Rating		
	Current	Potential
Very energy efficient - lower running costs		
(92 plus) A		
(81-91) B		
(69-80) C		76
(55-68) D	62	
(39-54) E		
(21-38) F		
(1-20) G		
Not energy efficient - higher running costs		
England & Wales	EU Directive 2002/91/EC	

Floor plan produced in accordance with RICS Property Measurement 2nd Edition, Incorporating International Property Measurement Standards (IPMS2 Residential). © ritchicom 2026. Produced for Sparks Ellison. REF: 1408643

94 Winchester Road, Chandler's Ford, Hampshire, SO53 2GJ

Sales: t: 02380 255333 e: property@sparksellison.co.uk
 Lettings: t: 02380 018518 e: lettings@sparksellison.co.uk

While we endeavour to make our sales particulars fair, accurate and reliable, they are only a general guide to the property and, accordingly, if there is any point which is of particular importance to you please contact the office and we will be pleased to check it for you, especially if you are contemplating travelling some distance to view the property. These approximate room sizes are only intended as general guidance. You must verify the dimensions carefully before ordering carpets or any built in furniture. Please note we have not tested the services or any of the equipment or appliances in this property, accordingly we strongly advise prospective buyers to commission their own survey or service report before finalising their offer to purchase. These particulars are issued in good faith but do not constitute representations of fact or form part of any offer or contract. The matters referred to in these particulars should be independently verified by prospective buyers or tenants. Neither Sparks Ellison nor any of its employees or agents has any authority to make or give any representation or warranty whatever in relation to this property. Your home is at risk if you do not keep up repayments on a mortgage or other loan secured on it. Written quotations available on request. All loans secured on property. Life assurance usually required.



